

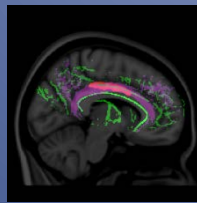
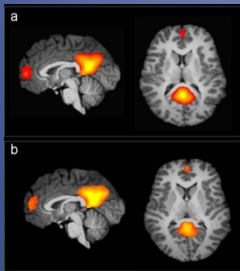
Maternal Substance Abuse and Child Development Laboratory (MSACD Project)

<http://www.emory.edu/MSACD>

Developmental
Research/Brain Imaging

Prevention

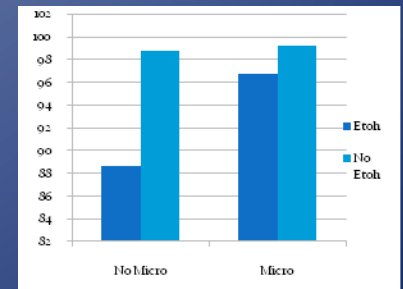
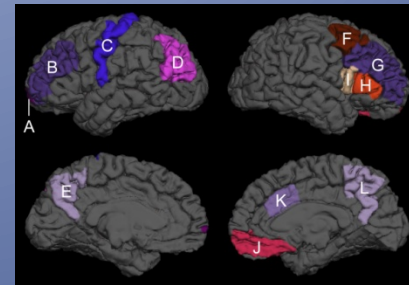
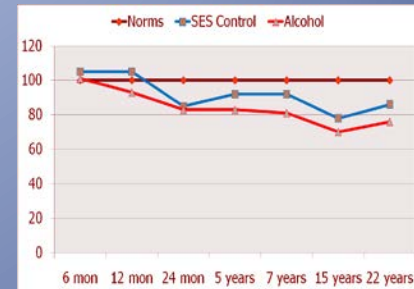
Treatment
Research



Since 1980 the focus of the MSACD, under the direction of Claire D. Coles, PhD, has been on the effects of prenatal exposure to alcohol and other drugs (both legal and prescription) as well as associated factors in understanding child, adolescent and adult development. Our Mission includes Developmental and Intervention Research and Prevention Services as well as Diagnosis and Treatment

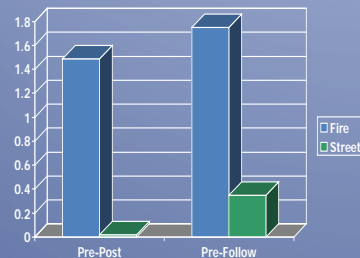
Longitudinal Research to establish effects of Teratogenic Exposure on Development

- Fetal Alcohol Syndrome (FAS) and fetal alcohol Spectrum disorders (FASD) (1980-2011) (NIAAA)
- Prenatal Exposure to Cocaine (1988-2007) (NIDA)
- Moderate Alcohol exposure and Social Class (1992-1999) (CDC)
- Prenatal exposure to Tobacco (2002-2007) (NICHD)
- Collaborative Initiative on FASD (CIFASD)(2008-2014)
- Alcohol exposure and nutrition in the Ukraine (2003-2014) (NIAAA-CIFASD)



Intervention and Intervention research: Children 3 to 10 years

• Virtual Reality Safety Games (SBIR-NIAAA)



Go-FAR: Behavior Regulation (2009-2014: NIAAA)

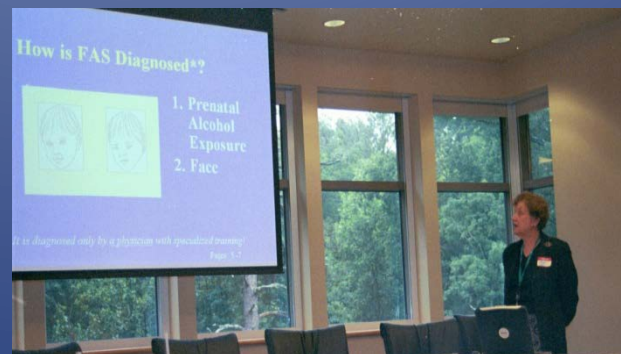


• Math Interactive Learning Experience (MILE) (2000-2011: CDC)



Prevention and Community Activities

- Website (www.emory.edu/MSACD)
- Training professionals and public
- Consultation with community groups
- Prevention material and curriculums
- National Conferences (Spray Foundation)
- Teratology Information Services (TIS)
- Emory Neurodevelopmental Exposures Clinic



Supported by
Georgia
DBHDD,
1980-2014



Metro Atlanta, serving State of Georgia

**Private nonprofit outpatient Clinic,
established 1995**

**Associated with Department of Pediatrics and
Psychiatry, Emory University School of
Medicine**

In 2010,

New patient Diagnoses: 250-300

Patient encounters/year: 2500

Emory Neurodevelopmental Exposure Clinic

Exposed to:

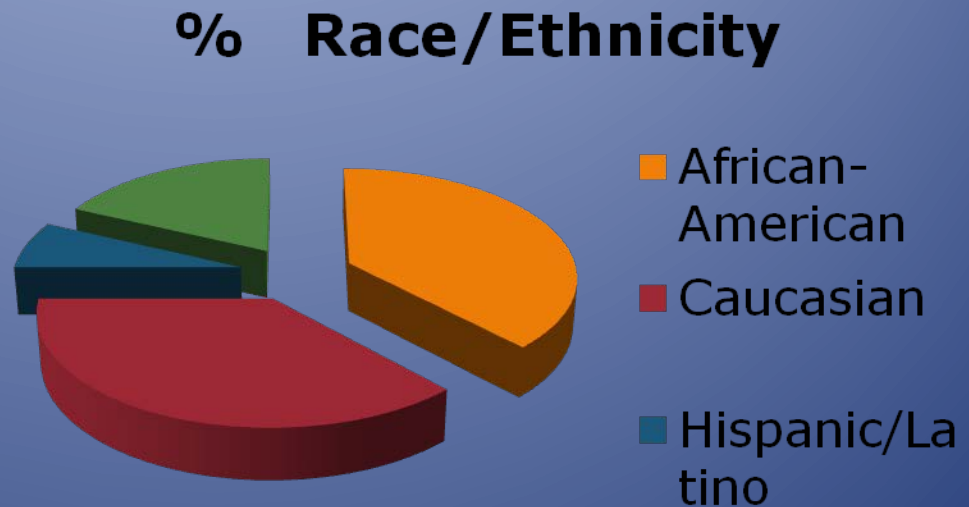
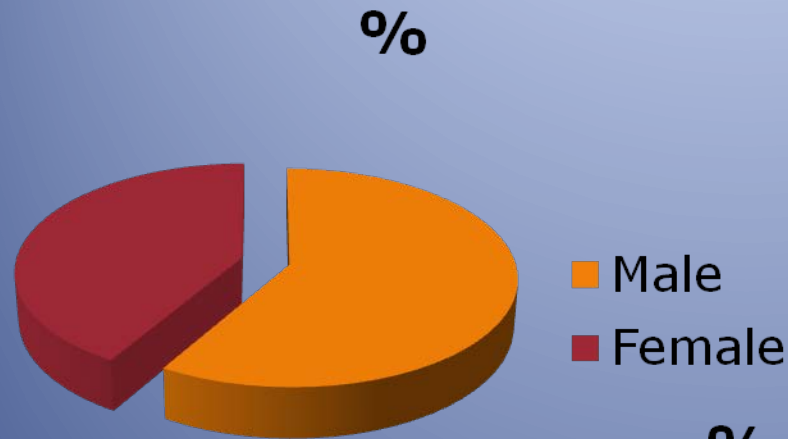
- Alcohol (FAS and FASD)
- Drugs of abuse (Cocaine, heroin, Methamphetamines)
- Prescription Drugs
- Parental substance abuse
- Environmental

Eligibility Criteria

- Age Range: Pediatric, 0 to 21 years
- Indication of prenatal exposure to alcohol, other drugs, teratogenic agents
- Referral by primary care physician or other agency/professional
- Symptoms not accounted for by other diagnosis (e.g., genetic condition)

Collaborative Activities of the ENEC

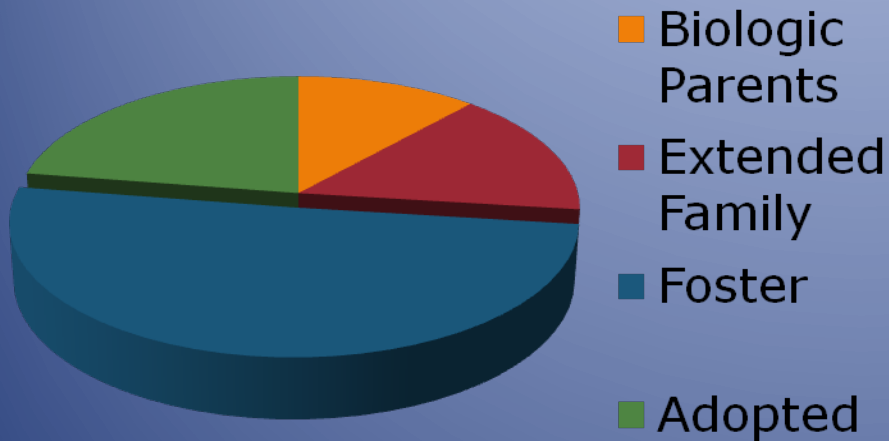
- Clinical Service to Children and Families
- Research on characteristics of affected children and Intervention
- Education of Health Care Professional
- Training for Interventionists and Community



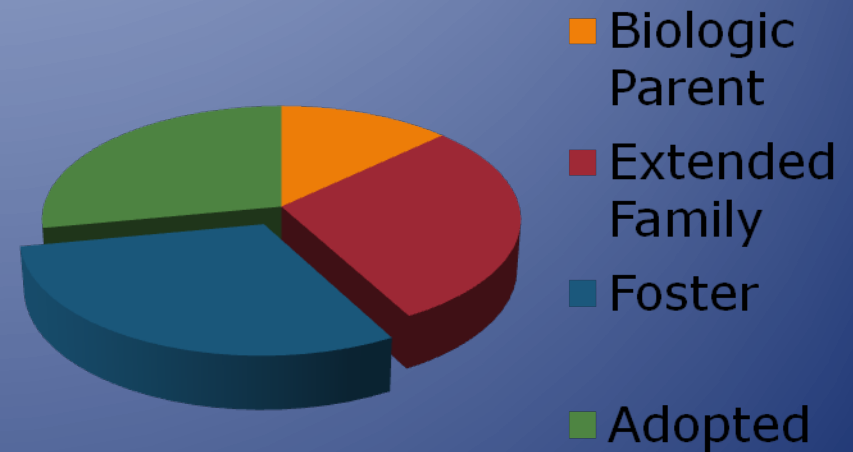
Patient Demographics, 2010

Custody Status 2000-2010

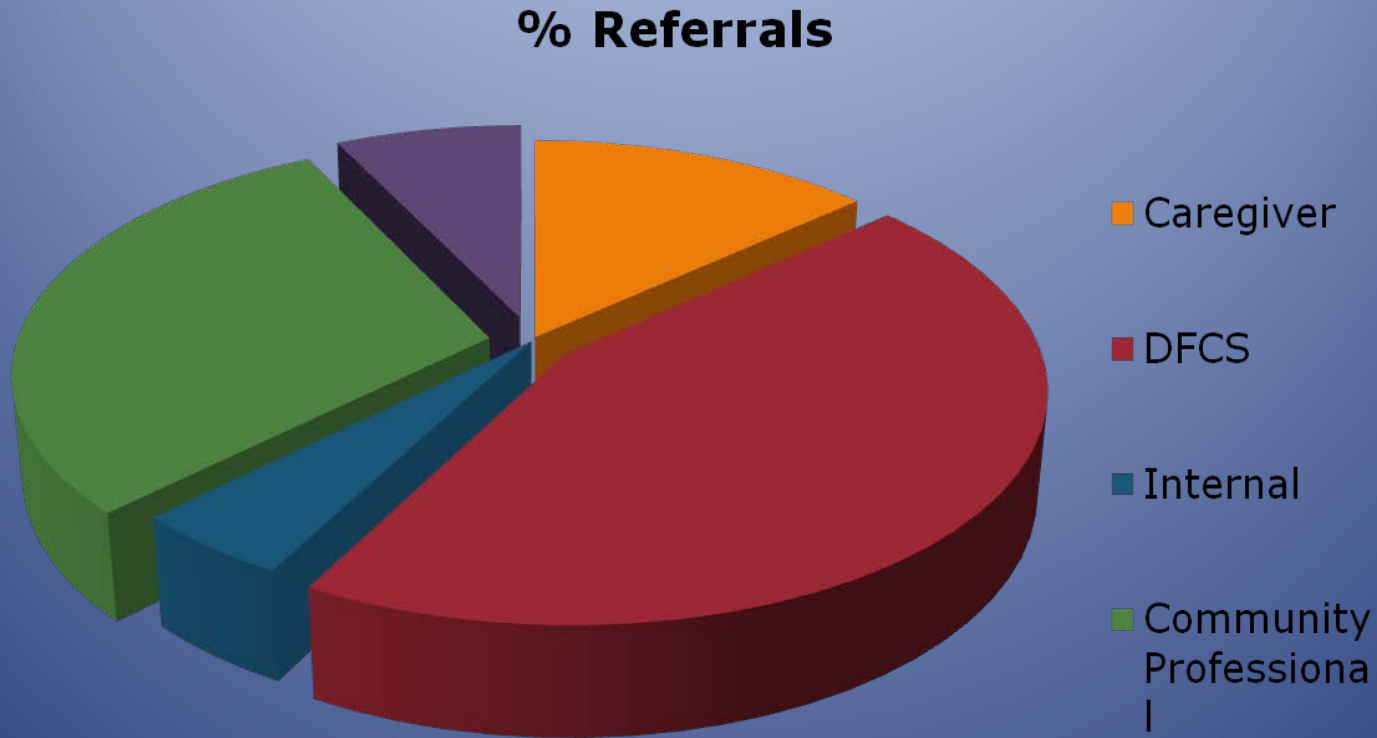
%Caregiver-2000



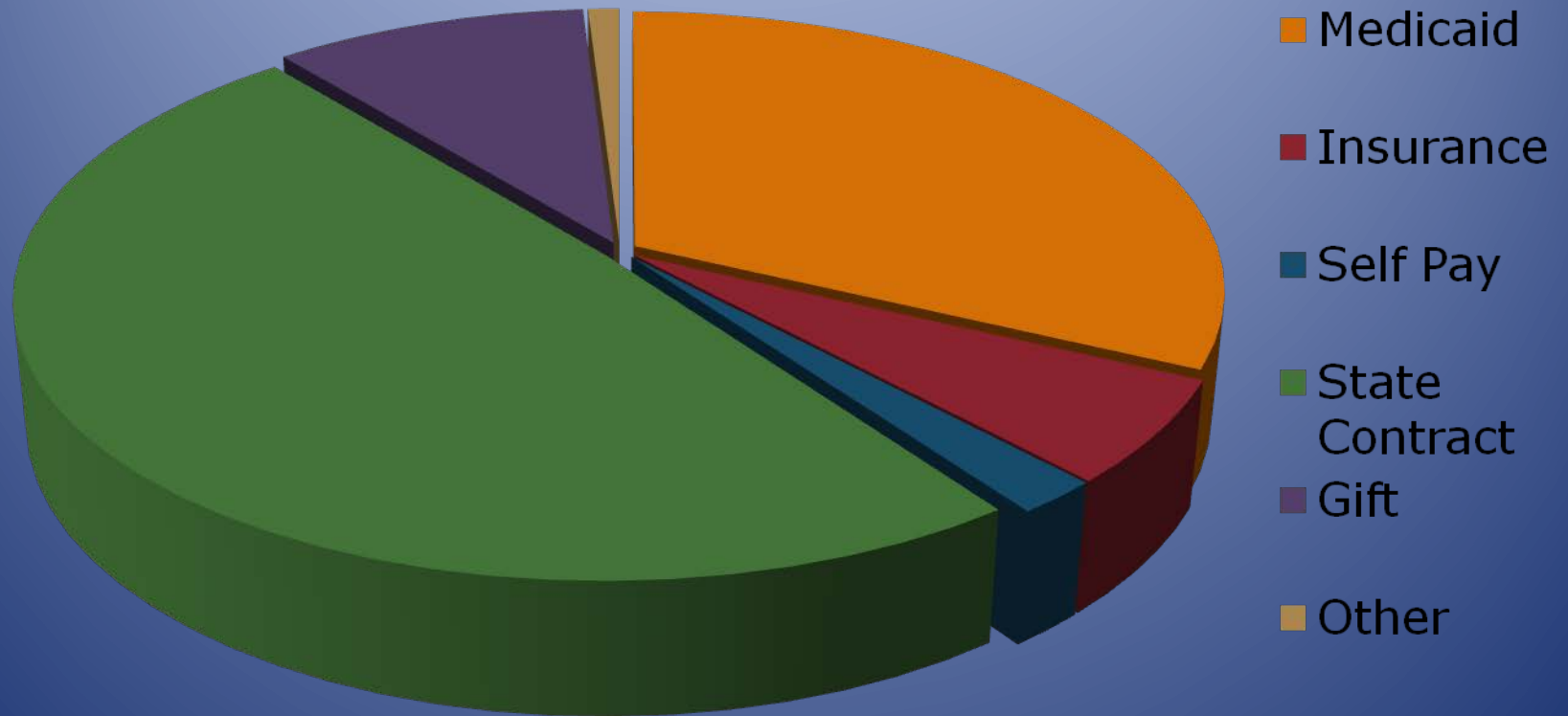
% Caregiver-2010



Referral sources



%



Funding Mechanisms, 2010

MSACD Teratogen Information Services: Mother to Baby GA



MotherToBaby

Medications & More During Pregnancy & Breastfeeding
Ask The Experts



Raising Mom's Awareness. Reducing Baby's Risk.



OTIS
Organization of Teratology
Information Specialists

**Maternal Substance Abuse and
Child Development Project**
www.emory.edu/MSACD

