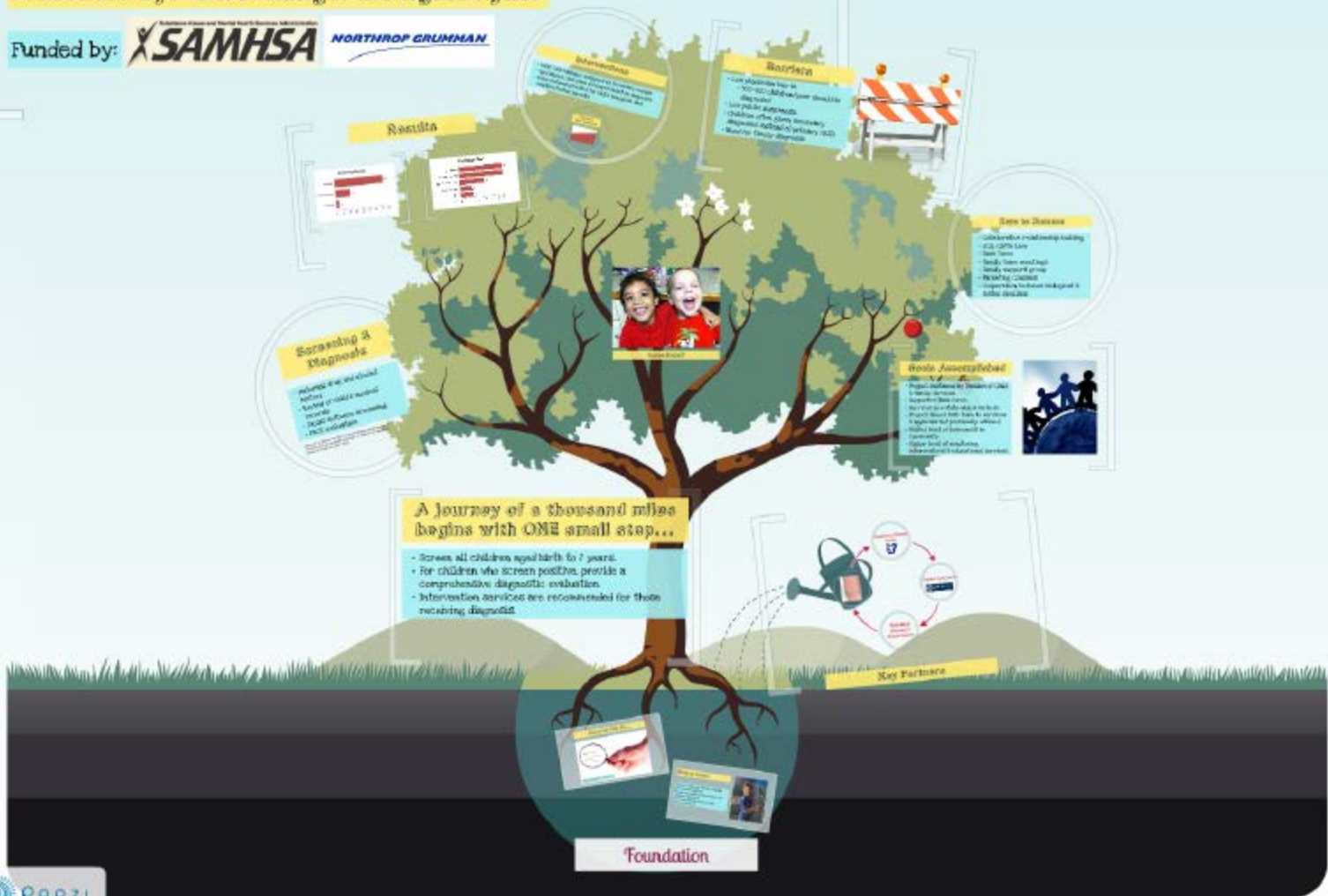


# The Arkansas State FASD Program

Presented by: Carol Rangel & Angela Kyzer

Funded by:

**NORTHROP GRUMMAN**

# The Arkansas State FASD Program

Presented by: Carol Rangel & Angela Kyzer

Funded by:



NORTHROP GRUMMAN



## Research Tells Us...



## Project Goals

Screen & diagnose children entering child welfare system.  
Provide specialized interventions for children diagnosed.  
Increase stability and decrease placement moves.



# Foundation

## Research Tells Us...



Astley, S.J., Stachowiak, J., Claren, S.K., & Clausen, C. (2002). Application of the fetal alcohol syndrome facial photographic screening tool in a foster care population. *Pediatrics*, 110(3), 712-717.

Developmental Disabilities

Growth Deficiencies

Mental Illness

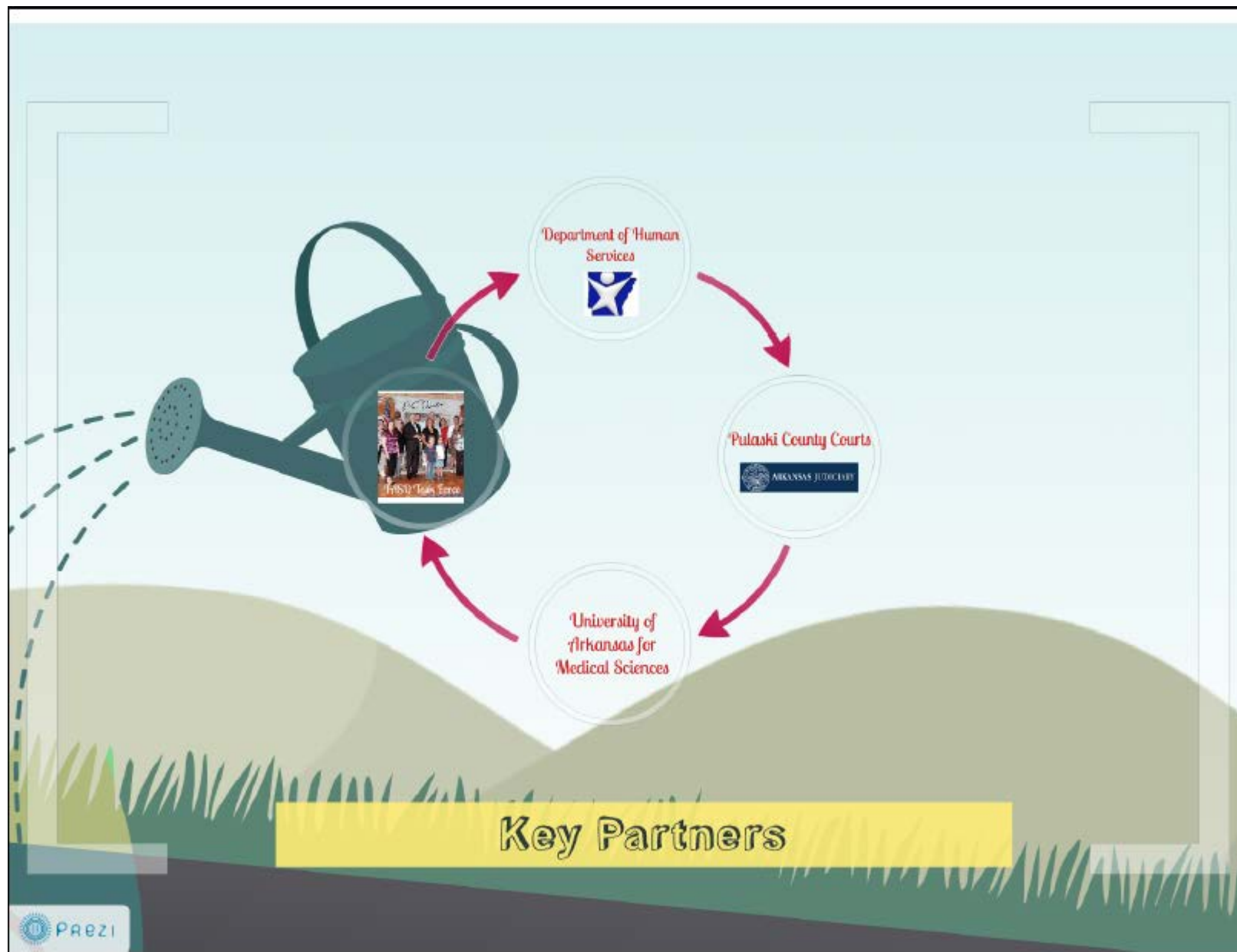
Substance Use



## Project Goals

Screen & diagnose children entering child welfare system.  
Provide specialized interventions for children diagnosed.  
Increase stability and decrease placement moves.





# Department of Human Services

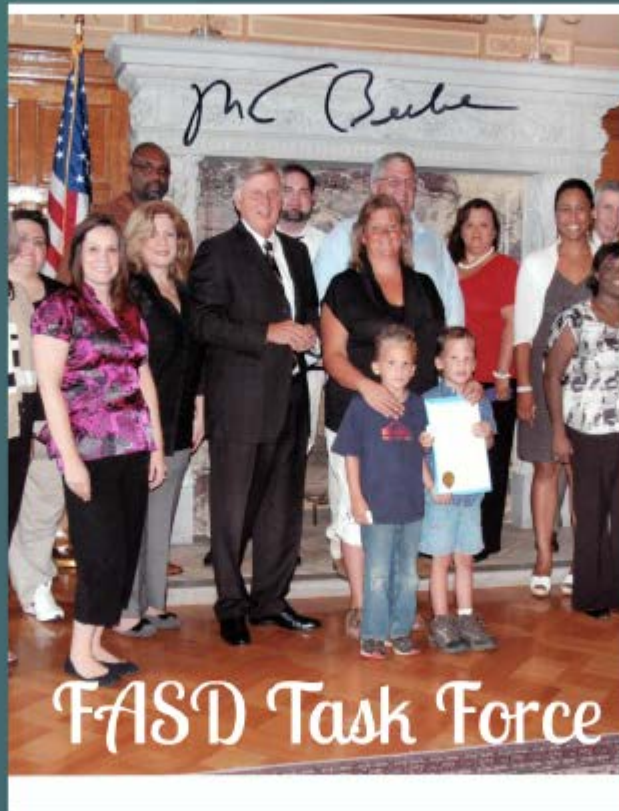




# Pulaski County Courts



# University of Arkansas for Medical Sciences





## A journey of a thousand miles begins with ONE small step...

- Screen all children aged birth to 7 years.
- For children who Screen positive, provide a comprehensive diagnostic evaluation.
- Intervention Services are recommended for those receiving diagnosis.

# Screening & Diagnosis

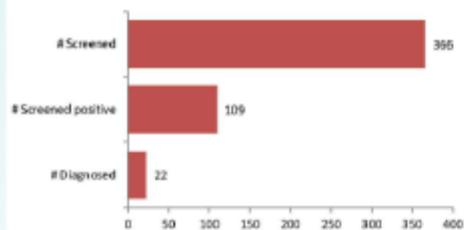
- Maternal drug and alcohol history.
- Review of child's medical records.
- Facial Software Screening.
- PACE evaluation

Astley, S.J. & Clarren, S.K. (1996). A case definition and photographic screening tool for the facial phenotype of fetal alcohol syndrome. *Journal of Pediatrics*, 129(1), 33-41.

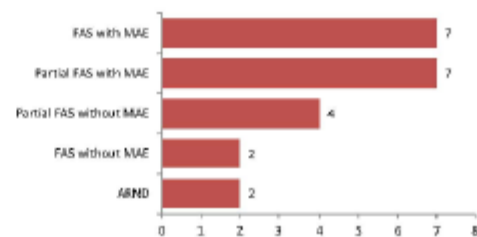


# Results

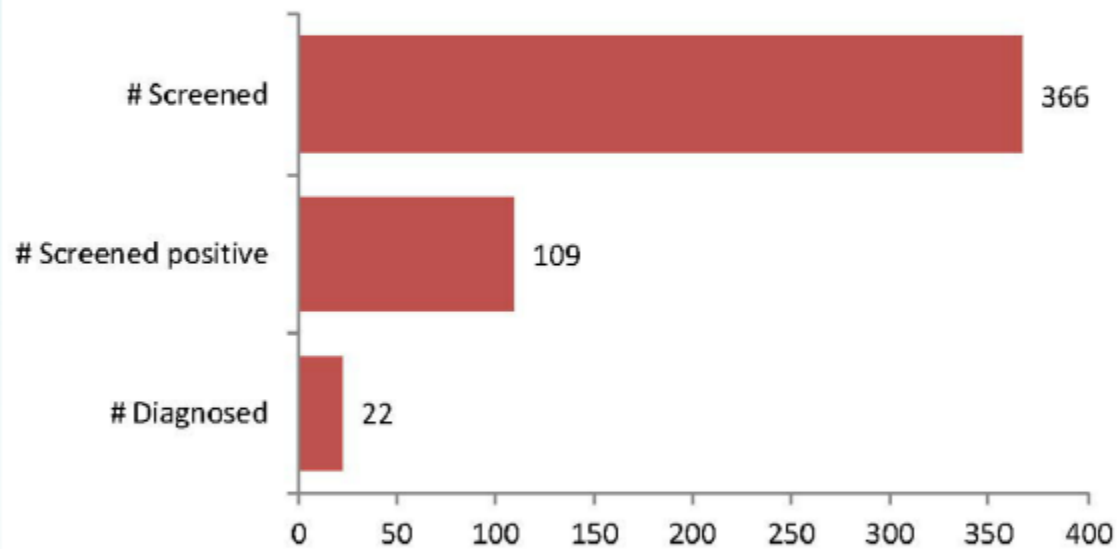
Screening Results



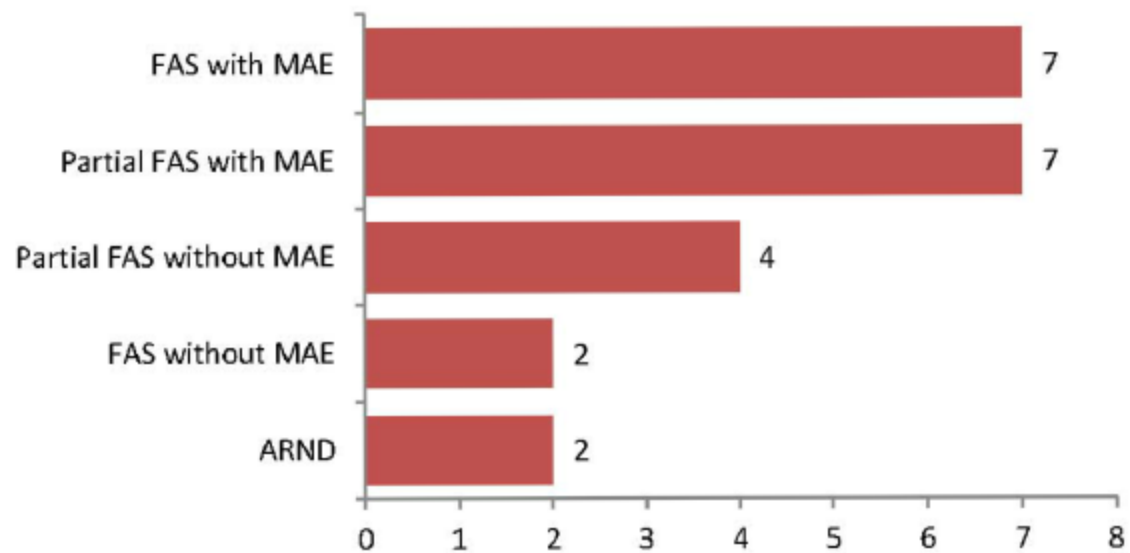
Diagnoses Given



## Screening Results



## Diagnoses Given



zer

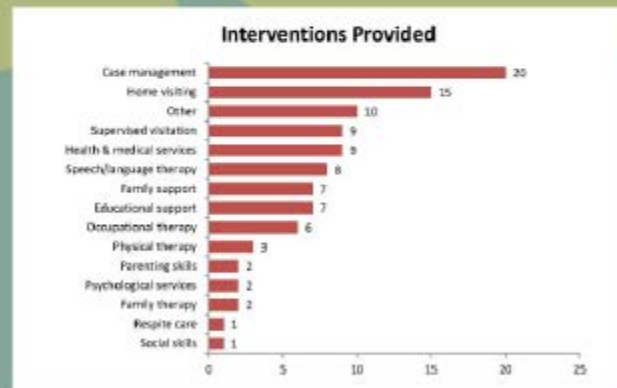
## Interventions

- FASD Case Manager assigned as Secondary worker.
- Specialized case plan developed based on diagnosis.
- Interventions provided for child, biological, and adoptive/foster parents.

### Common Interventions

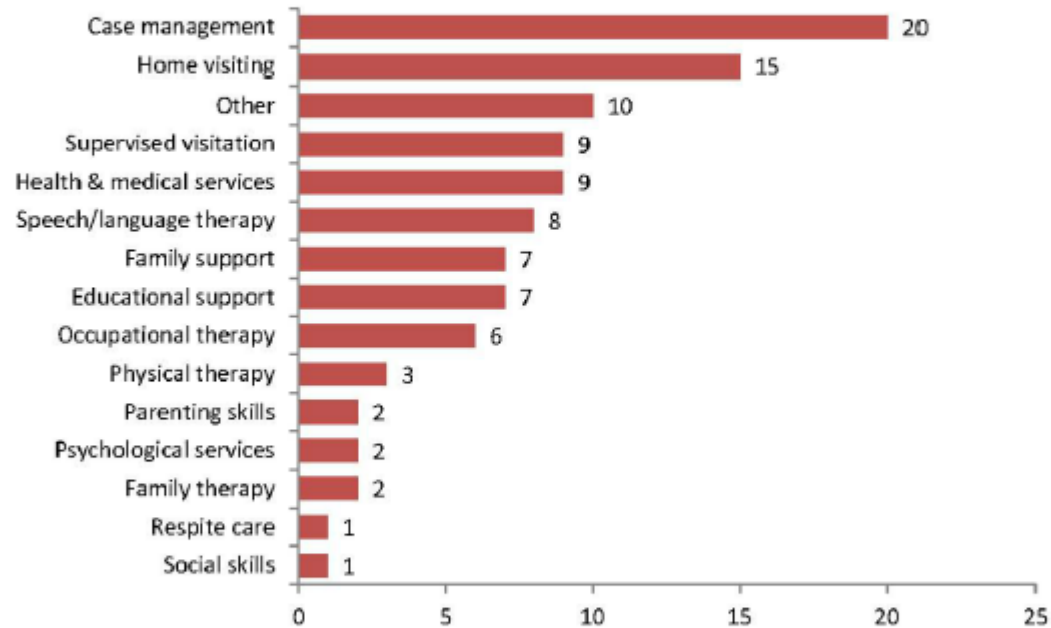


# Common Interventions





## Interventions Provided



## Barriers

- Low physician buy-in.
  - 300-400 children/year should be diagnosed
- Low public awareness.
- Children often given secondary diagnoses instead of primary FASD.
- Need for timely diagnosis.



## Keys to Success

- Collaborative relationship building
- 2011 CAPTA Law
- Task Force
- Family team meetings
- Family Support group
- Parenting classes
- Cooperation between biological & foster families

## Goals Accomplished

- Project Sustained by Division of Child & Family Services.
- Supportive Task Force.
- Services now State-wide & birth-18.
- Project linked FASD team to Services & agencies not previously utilized.
- Raised level of awareness in community.
- Higher level of monitoring interventions & educational services.





Questions?